

SERIES 300



L-PAD CURTAIN

SUBMITTED FOR APPROVAL

Truck dock Dor-Seals shall be "L" Pad Curtain Series 300 Model _____ as manufactured by Chalfant Sewing Fabricators, Inc. 11525 Madison Avenue, Cleveland, Ohio 44102, to fit door opening _____" wide by _____" high. Base cover fabric shall be _____; and color of base fabric to be _____. Contact face fabric to be _____ contact face to be _____. Guide stripe shall be high visibility yellow orange full length standard length.

Guardian Dor-Seal System Options

- Foam Backing - Conforms to building wall irregularities
- Extra wood substructure - Strong, secure connection for installations

General Options

- Foam Backing Extra substructure wood mounting for metal buildings
- Flame-retardant fabric Door numbers on unit (specify in notes)
- Inside wear face (vertical side pad inside chafe reinforcement) 4' 8'
- Bottom Draft Flaps 3" 6" Inside Front All
- Metal Hoods 10' 12' 14" Proj 18" Proj 24" Proj 36" Proj

Standard Construction Features Summary

- "L" shape side pads to provide tight seal against truck and prevent weather, dust, bugs, exhaust fumes from entering building.
- High resilient premium grade polyurthane foam, bonded with high quality liquid adhesive to kiln dried wood, all are encased inside the dock seal fabric cover to protect it from abuse and the elements (optional 14 gauge galvanized steel backing also available).
- All pads are equipped with air vents to help minimize rupture, and drain holes equipped with brass grommet type drain holes to reduce moisture build-up.
- Wide variety of tested high quality fabrics available (see chart below)
- One (1) year Guarantee against manufacturing defects in material & workmanship from date of installation. *Excludes any failure caused by improper application, improper installation, damage caused by damaged trucks or trailers, overloading, abuse or negligence, are not covered by warranty.

Chalfant has pioneered, developed and provided the industry with quality loading dock equipment since 1940. Safe, affordable, reliable dock equipment for your application needs.



*Shown with Optional 8" Guardian Wear Pleats

Consistent with our policy of continuing product improvement, we reserve the right to change these specifications without notice or obligation.

Select Base Face Fabric And Unit Color:

- | | | | | | | |
|--------------------------------------|--------------------------------------|--|--|---|---|--|
| <input type="checkbox"/> 22 oz Vinyl | <input type="checkbox"/> 40 oz Vinyl | <input type="checkbox"/> 16 oz Hypalon | <input type="checkbox"/> 40 oz Hypalon | <input type="checkbox"/> 16 oz Neoprene | <input type="checkbox"/> 40 oz Neoprene | <input type="checkbox"/> High-Tear Resistant Guardian 60 |
| <input type="checkbox"/> Black | <input type="checkbox"/> Black | <input type="checkbox"/> Black | <input type="checkbox"/> Black | <input type="checkbox"/> Black | <input type="checkbox"/> Black | <input type="checkbox"/> Black |
| <input type="checkbox"/> Blue | <input type="checkbox"/> Blue | <input type="checkbox"/> Blue | <input type="checkbox"/> Tan | | | |
| <input type="checkbox"/> Tan | <input type="checkbox"/> Tan | <input type="checkbox"/> Green | <input type="checkbox"/> Brown | | | |
| <input type="checkbox"/> Green | <input type="checkbox"/> Brown | <input type="checkbox"/> Brown | | | | |
| <input type="checkbox"/> Brown | | | | | | |

Note: See Main Catalog For Actual Colors. Samples Of Materials Are Available Upon Request Consult Factory For Other Available Colors.

Select Contact Face:

- Wear Face
- Guardian Face
- Guardian Pleat GP4
- Guardian Pleat GP8
- Guardian Pleat GP16



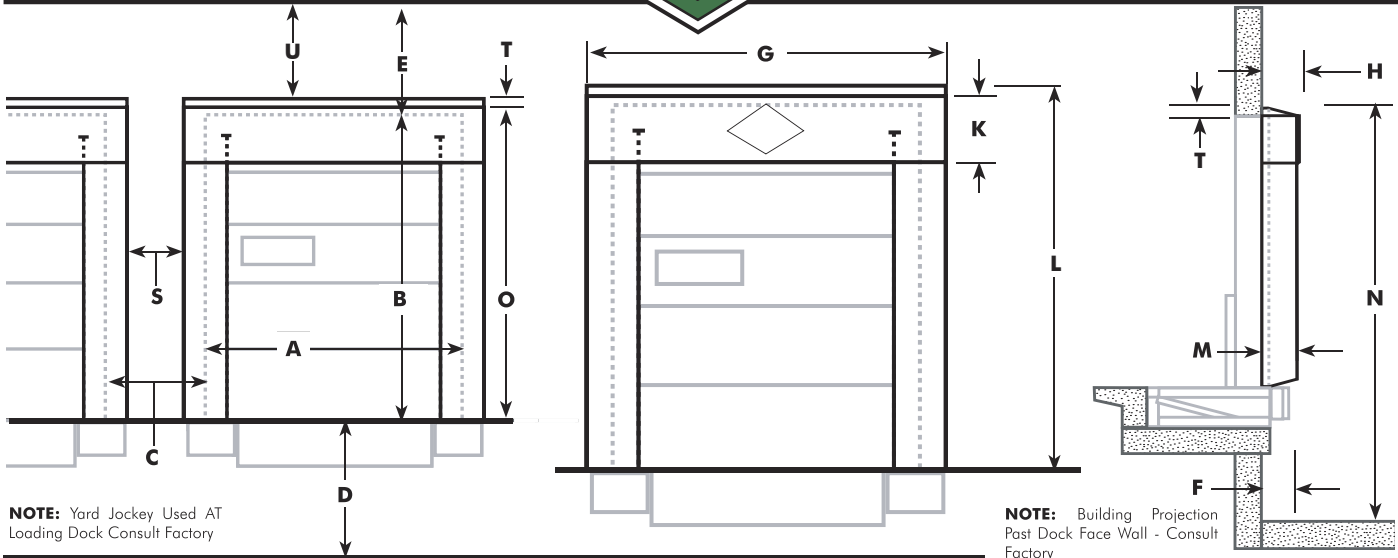
Select Contact Fabric:

- 22 oz Vinyl
- 40 oz Vinyl
- 16 oz Hypalon
- 40 oz Hypalon
- 16 oz Neoprene
- 40 oz Neoprene
- High-Tear Resistant Guardian 60

SERIES 300



L-PAD CURTAIN



NOTE: Yard Jockey Used AT Loading Dock Consult Factory

NOTE: Building Projection Past Dock Face Wall - Consult Factory

General Information

Model _____ Color _____
 Door Size: Width-**A** _____ Height-**B** _____
 Number Of Units _____ Base Fabric _____
 Contact Material _____ Contact Face Type _____
 Inside Wear Face _____ Flame-Retardant Fabric
 3-Ply Reinforced Top 3-Ply Reinforced Bottom
 Guide Stripe: Yellow Orange Full Length Standard Length
 Dock Height-**D** _____ Dock Bumper Projection _____
 Plus Wall Set Back _____ Total-**F** _____
 Approach: % of Incline _____ Bumper Projection _____
 % of Decline _____ Bumper Projection _____
 Level Drive Approach Bumper Projection _____
 Distance: Between Doors-**C** _____ Between Units-**S** _____
 Clearance : Above Doors-**E** _____ Above Unit-**U** _____

Standard Seal Information

Side Pad Length-**O** _____ Side Pad Dimensions: Face _____ Back _____
 Bottom Projection of Unit-**M** _____ Top Projection of Unit-**H** _____
 Bottom Draft Flaps: 3" 6" Inside Front All
 Head Curtain Required Height-**T** _____ Block-Out- _____
 Front of Seal Opening: Width _____ Height _____
 Overall Outside Unit Dimensions Width-**G** _____ Height-**L** _____
 Total Height of Unit From Driveway-**N** _____

Drop Curtain Height-K

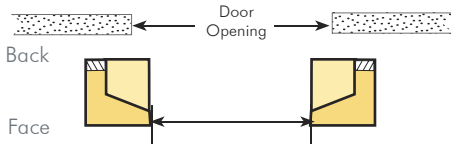
Velcro Adjustable Drop Curtain With Pull Ropes
 Foam Front Specify _____ Weighted Door Numbers _____

Truck Service Range

Min. Height _____ Max. Height _____
 Min. Width _____ Max. Width _____

SPECIFY MOUNTING

Type B: L - Pad, Off-Set Mount



SIDE PAD - Width of Pad Face _____

The "L" Pad Curtain Series 300 feature a unique design that acts like a dock shelter and dock seal combined. The 300 provides similar projection of a dock shelter, tight fit of a dock seal while allowing full access to the rear of the trailer and yields under off-center truck improper positioning at the loading dock.

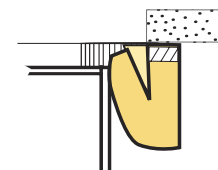
OPEN DOCK POSITION

"L" Pad Side Pad



TRUCK IN POSITION

"L" Pad Side Pad
In Compression



MODEL: _____ QUANTITY: _____
 CUSTOMER: _____
 SIGNATURE APPROVED BY: _____
 PROJECT: _____
 ADDRESS: _____
 CITY: _____ STATE: _____
 ARCHITECT: _____
 GENERAL CONTRACTOR: _____



"Quality Made, Built To Last"

11525 MADISON AVENUE
 CLEVELAND, OH 44102-2325
 TEL: 216-521-7922 FAX: 216-521-6854
 VISIT US ON THE WEB: www.ChalfantUSA.com