

TL-250

*With
EZ Hang
Hardware*

Features:

- 1/4" thick, durable ABS door body.
- Stainless steel EZ Hang™ hinge.
- Stainless steel jamb guards.
- Low maintenance EZ Hang™ hardware.
- EZ Hang™ hinge swings 125° in both directions.
- Unique mounting brackets simplify installation.
- Choice of decorative ABS colors.
- Reinforced spine for extra strength at key stress points.

Solid ABS Door Body Provides Both Durability and Attractive Decor.

The TL-250™ double-acting door is specially designed for retail and food service applications where an attractive, durable and affordable traffic door is needed. It is ideal for use in restaurants, supermarkets, and retail stores between stock rooms and the sales areas. The TL-250 solid ABS door-body is impervious to moisture, food stains and common chemicals. Drips, spills and smears simply wipe off, leaving a clean restored surface.

Unique design eliminates chipping or peeling

The TL-250™ door body is made of 1/4" (.250") thick extruded ABS plastic. It is a one-piece, solid-core door without gasketing. The flexible nature of the door allows it to function well even in high cart and personnel traffic areas.

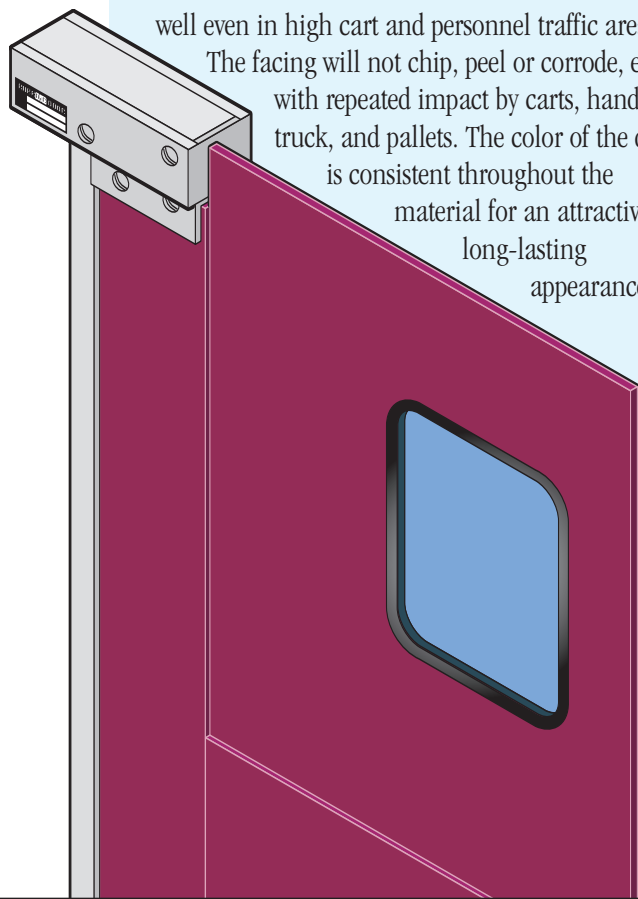
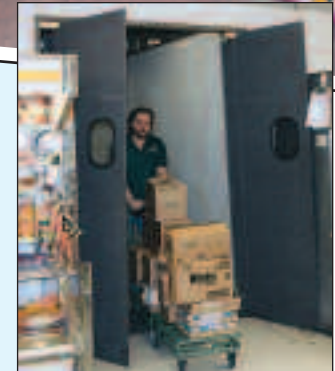
The facing will not chip, peel or corrode, even with repeated impact by carts, hand truck, and pallets. The color of the door is consistent throughout the material for an attractive, long-lasting appearance.

The TL-250™ opens quick and easy with EZ Hang™ hardware

With RubbAir's exclusive EZ Hang™ hinge system, the TL-250™ operates smoothly and quietly. Easy-to-open doors will translate to longer lasting doors and safer product passage. TL-250™ doors open 125° in each direction to the natural flow of traffic.

Custom made to exact size

All RubbAir doors are made to exact size specifications to fit existing door openings. Sizes are customized to 1/8" so that every TL-250™ door fits perfectly for consistent performance.

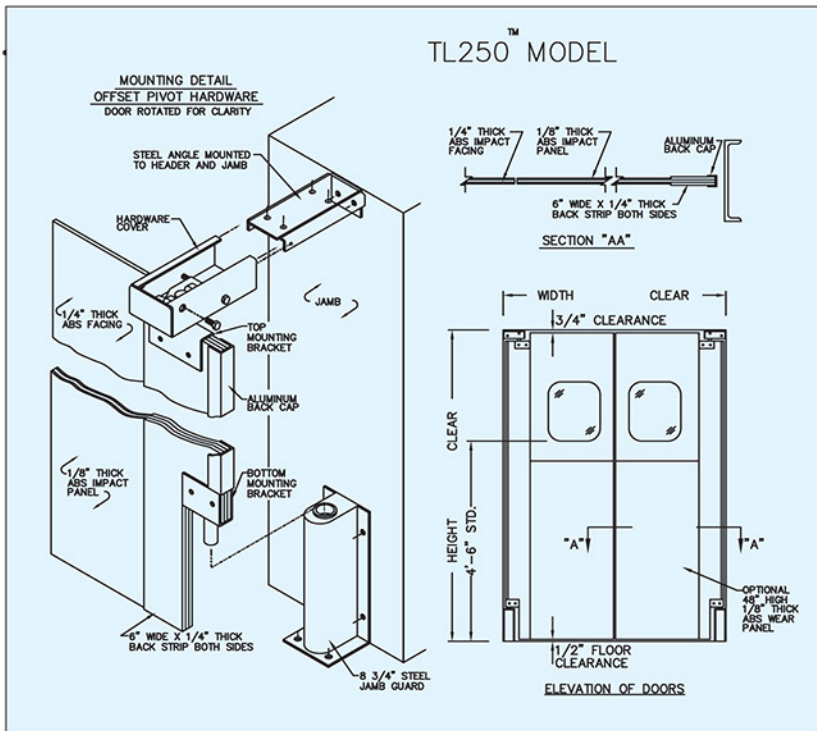


Available Options:

- Choice of decorative colors.
- Impact panels any height up to 48".
- Vision panels in various sizes and styles.
- Flexible transoms for extra high openings.
- Pre-hung in aluminum frames.
- Self supporting steel frames.

Attractive and Durable for:

- Retail Stores
- Restaurants
- Food Service
- Kitchens
- Stock Rooms
- Prep Rooms



Easy to Install. Easy to Use. Easy to Maintain.

The Hinges make the difference!

The EZ Hang hinge on the TL-250 is what really sets it apart from the competition! The low impact activation using EZ Hang hinges will allow the TL-250 to out last most doors on the market and the stainless steel hinge and jamb guard will meet or exceed all sanitation standards.

Easy Installation

The TL-250 with an EZ Hang hinge can be installed in minutes. Simply install the upper hinge bracket and lower jamb guard into the jamb, slide the door into place and tighten two bolts. A screwdriver to make adjustment to center the hinge and you are done!

The Entire Family of RubbAir Impact Doors:

- Standard
- Standard XHD
- Ura-dor
- Poly-Kor
- Poly-Kor XHD
- Ultra-Lite
- Elite
- TL-250
- Flap-R
- Steel Lite
- Quantum



Oliver Eckel, Founder, demonstrates the Standard Model Door in 1952.



Protected under one or more of the following patents:
3,979,872,
4,078,334,
4,570,384
6,990,772B2

For additional information, including 3-part CSI specifications, visit us at www.rubbair.com